

For first time users

Start up & Set up hints for Brother Tank Sets

*WHEN USED WITH A COMPUTER AND/OR AS A STAND-ALONE

READ CAREFULLY

- Install Original Brother cartridges allowing printer to initialize
- **Remove clear silicone vent plug before installing tanks** } see diagram "B"
- **Do not remove the 'colored' plugs except to refill Edible Ink Tanks** } see diagram "B"
- Insert the correct color ink tank into the holder of the same color in your printer } see diagram "C"
- Close the printer cartridge cover
- When the printer or monitor shows the ink level is low you can verify this by opening the cartridge door and removing the cartridge
- You have the option to refill and/or replace with new cartridges
- When reinstalling the cartridge a window on the brother printer will give you the option – Did you replace the cartridge "YES" or "NO"
- If "YES", the window will show that the cartridge is full
- If "NO", the ink level will be the same as when it was removed
- Settings for all-in-one and Computer operated printers, make sure your settings are as follows:

COMPUTER SETTINGS

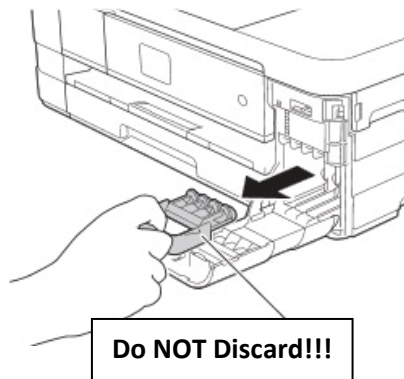
**Print Quality = "PHOTO" and
Media Type = "INK JET PAPER"**

STAND-ALONE SETTINGS

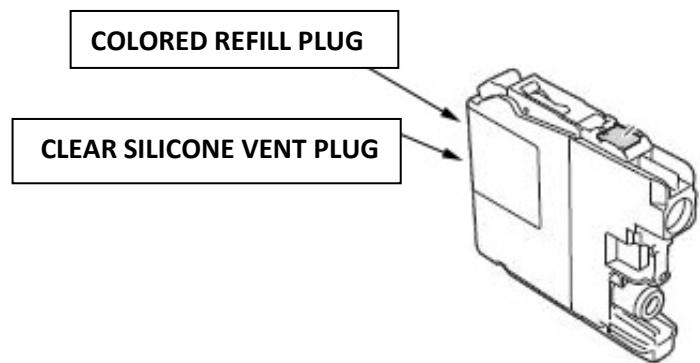
**Print Quality = "BEST" and
Media Type = "PLAIN PAPER"**

***Save the Colored Plugs for refilling the edible ink cartridges**

A) Remove the orange protective part



B)



C)

